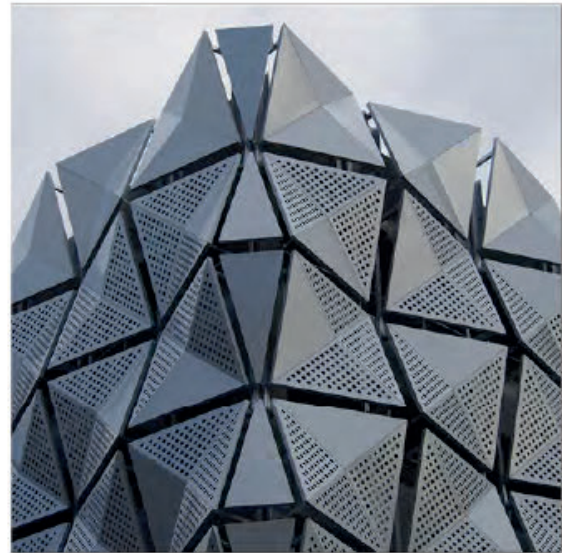
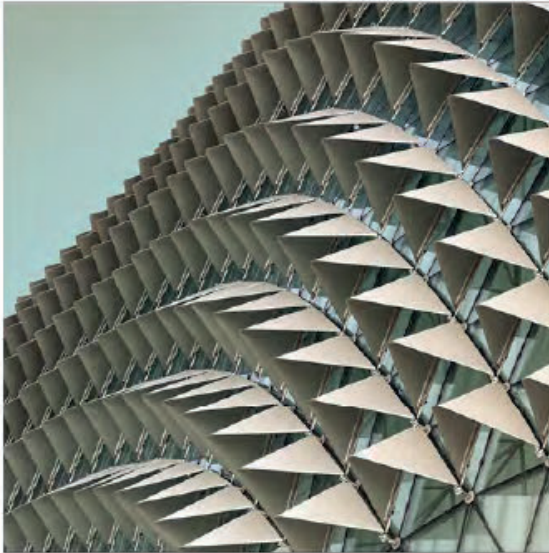
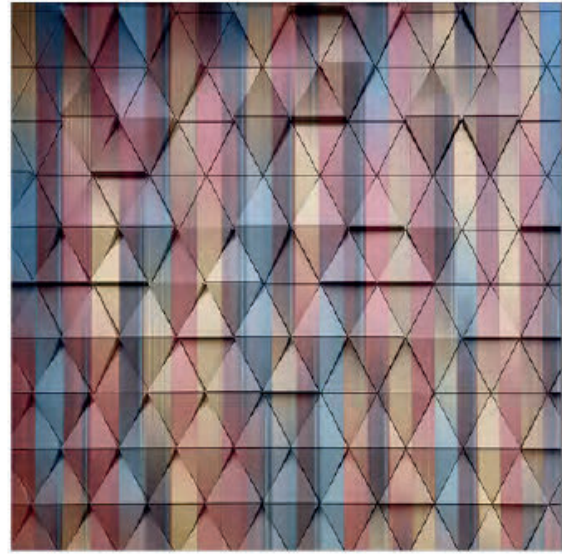
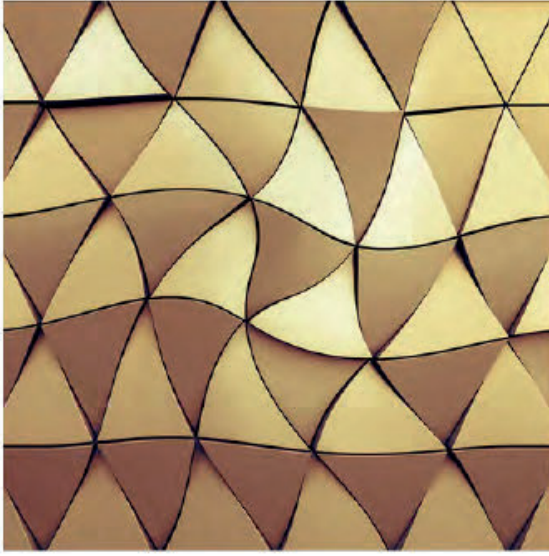


# AKSAL

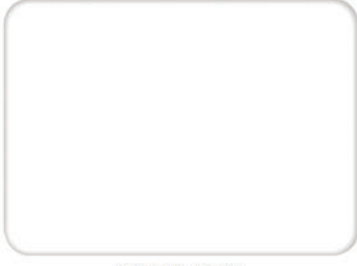
Alüminyum



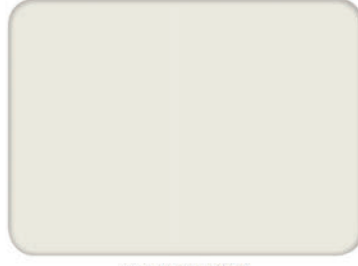
**ARWIS BOND**  
**CLASS BOND**

**PLUS<sup>+</sup> BOND**  
**FACE BOND**

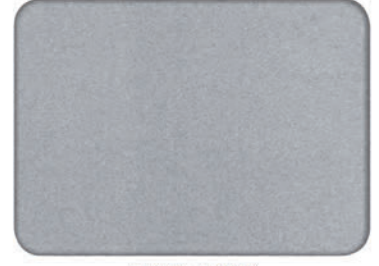
## ARWIS BOND



**AWB-501**  
Beyaz // White



**AWB-502**  
Krem // Cream



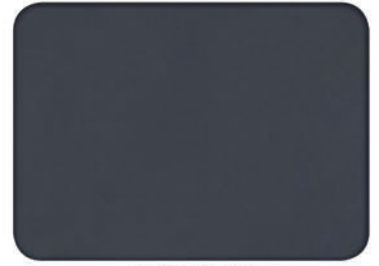
**AWB-503**  
Gümüş // Silver



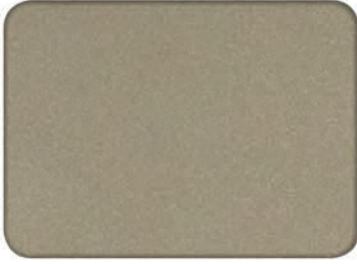
**AWB-504**  
Siyah // Black



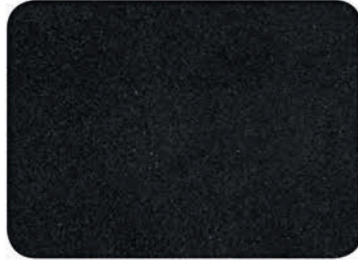
**AWB-505**  
Koyu Gri // Dark Grey



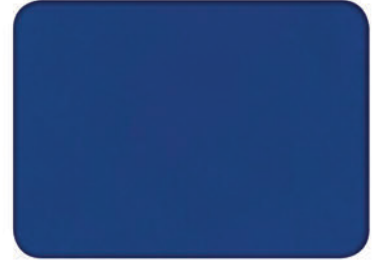
**AWB-508**  
Grafit Gri // Graphite Grey



**AWB-509**  
Açık Bronz // Light Bronze



**AWB-513**  
Simli Siyah // Silvery Black



**AWB-517**  
Ultra Marin Mavi // Ultra Marine Blue



**AWB-531**  
İnce Altın Meşe // Golden Oak Fine Wood

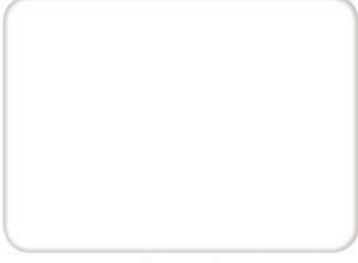


**AWB-532**  
Kalın Altın Meşe // Golden Oak Line Wood



**AWB-535**  
Açık Altın Meşe // Kiefer Line Wood

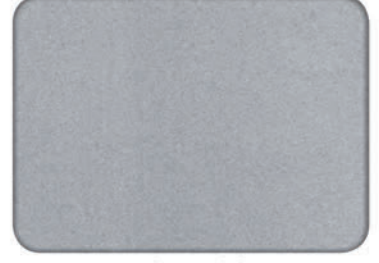
## FACE BOND



**FCB-401**  
Beyaz // White



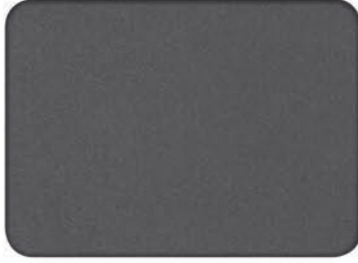
**FCB-402**  
Krem // Cream



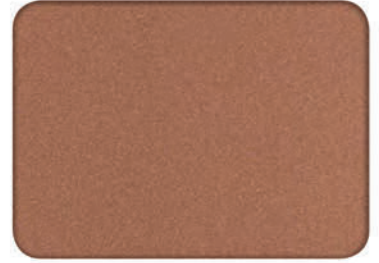
**FCB-403**  
Gümüş // Silver



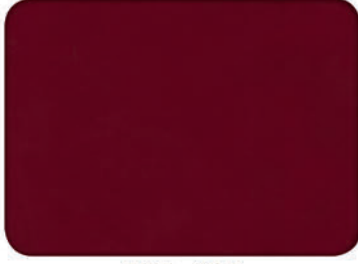
**FCB-404**  
Siyah // Black



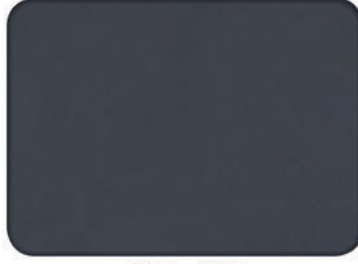
**FCB-405**  
Koyu Gri // Dark Grey



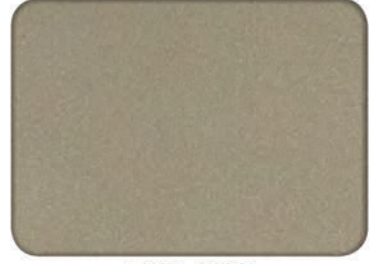
**FCB-406**  
Bakır // Cooper



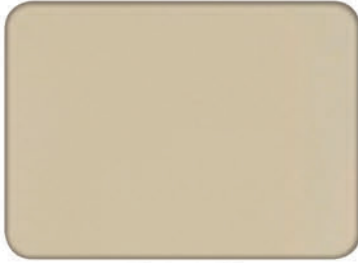
**FCB-407**  
Bordo // Burgundy



**FCB-408**  
Grafit Gri // Graphite Grey



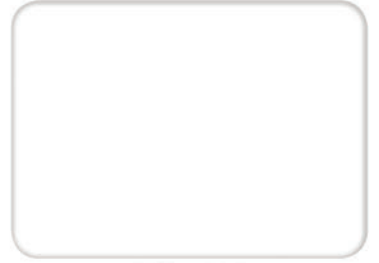
**FCB-409**  
Açık Bronz // Light Bronze



**FCB-410**  
Kum Beji // Sand



**FCB-411**  
Kırmızı // Red

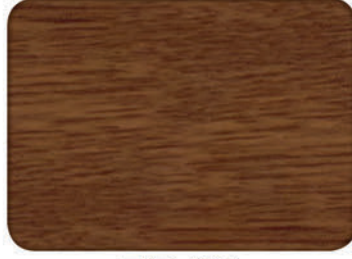


**FCB-415**  
Nano Beyaz // Nano White

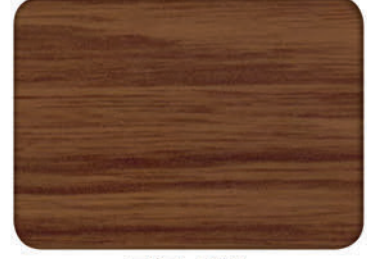
## FACE BOND



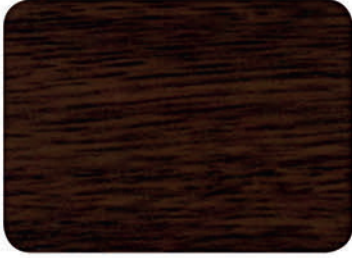
**FCB-420**  
Sarı // Yellow



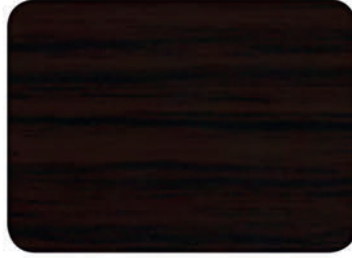
**FCB-431**  
İnce Altın Meşe // Golden Oak Fine Wood



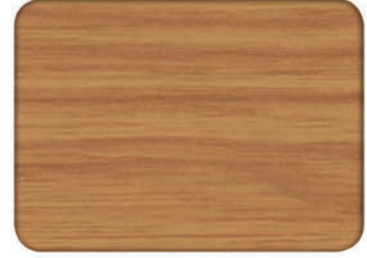
**FCB-432**  
Kalın Altın Meşe // Golden Oak Line Wood



**FCB-433**  
İnce Ceviz // Nussbaum

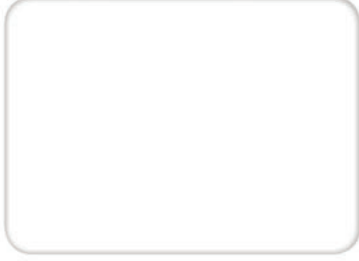


**FCB-434**  
Kalın Maun // Mahogany

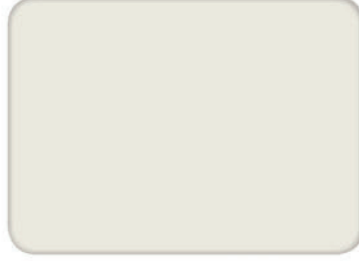


**FCB-435**  
Açık Altın Meşe // Kiefer Line Wood

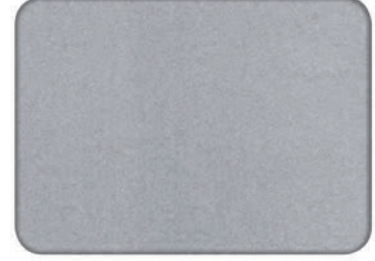
# PLUS<sup>+</sup> BOND



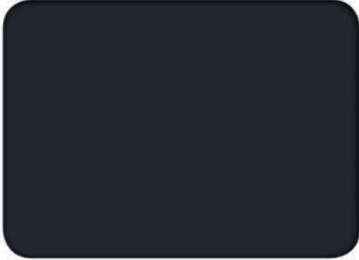
**PLB-301**  
Beyaz // White



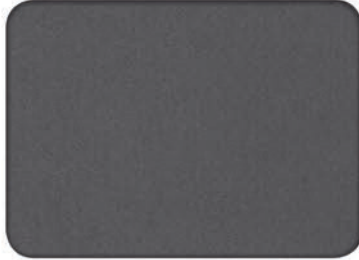
**PLB-302**  
Krem // Cream



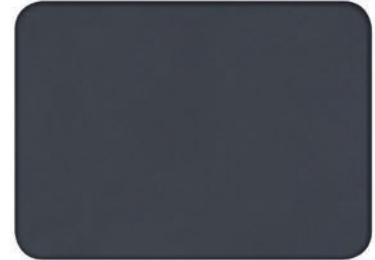
**PLB-303**  
Gümüş // Silver



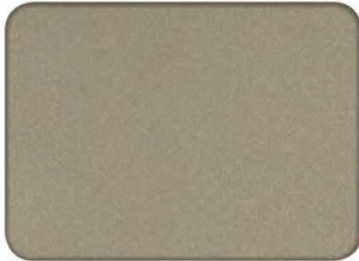
**PLB-304**  
Siyah // Black



**PLB-305**  
Koyu Gri // Dark Grey



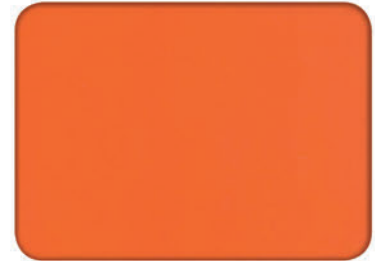
**PLB-308**  
Grafit Gri // Graphite Grey



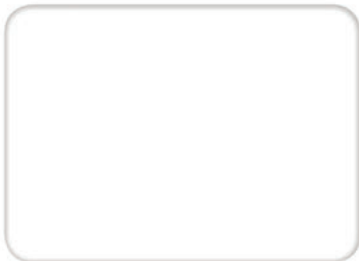
**PLB-309**  
Açık Bronz // Light Bronze



**PLB-311**  
Kırmızı // Red



**PLB-312**  
Pastel Turuncu // Pastel Orange



**PLB-315**  
Nano Beyaz // Nano White

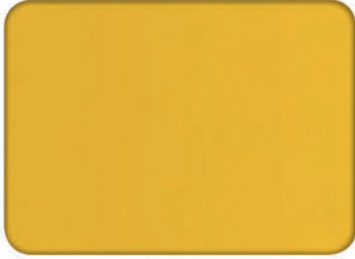


**PLB-316**  
Yeşil // Green

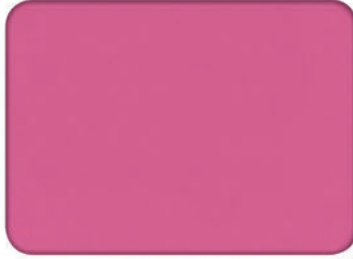


**PLB-317**  
Ultra Marin Mavi // Ultra Marine Blue

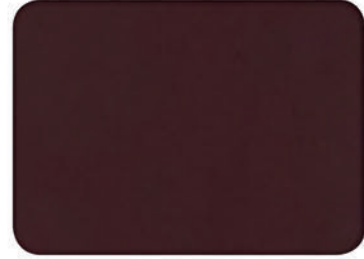
## PLUS<sup>+</sup> BOND



**PLB-320**  
Sar / Yellow



**PLB-323**  
Pembe // Heather Wioled



**PLB-324**  
Çikolata // Chocolate Brown



**PLB-331**  
İnce Altın Meşe // Golden Oak Fine Wood



**PLB-332**  
Kalın Altın Meşe // Golden Oak Line Wood



**PLB-335**  
Açık Altın Meşe // Kiefer Line Wood



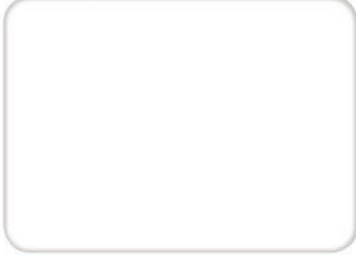
**PLB-340**  
Gümüş Ayna // Silver Mirror



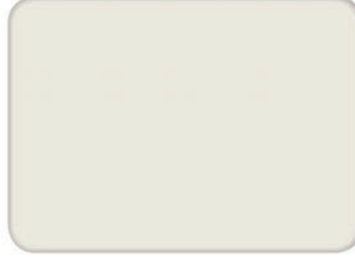
**PLB-341**  
Altın Ayna // Golden Mirror



## CLASS BOND



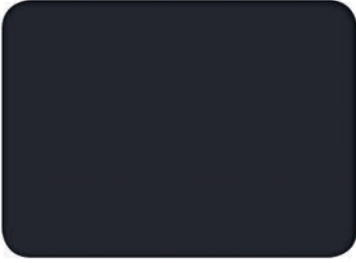
**CSB-201**  
Beyaz // White



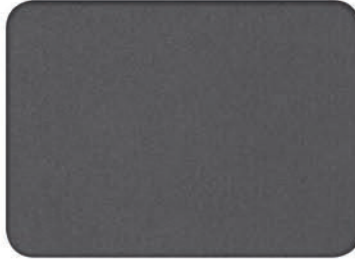
**CSB-202**  
Krem // Cream



**CSB-203**  
Gümüş // Silver



**CSB-204**  
Siyah // Black



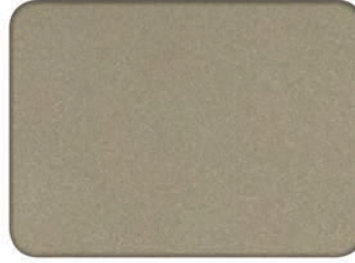
**CSB-205**  
Koyu Gri // Dark Grey



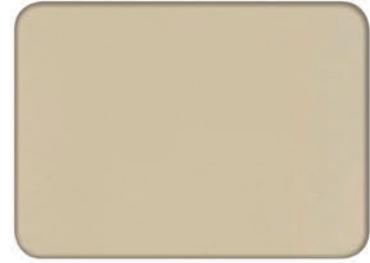
**CSB-206**  
Bakır // Cooper



**CSB-207**  
Bordo // Burgundy



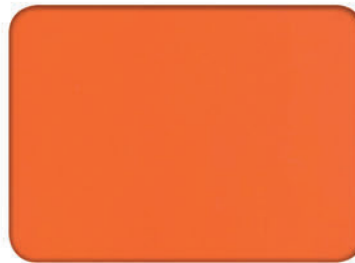
**CSB-209**  
Açık Bronz // Light Bronze



**CSB-210**  
Kum Beji // Sand



**CSB-211**  
Kırmızı // Red



**CSB-212**  
Pastel Turuncu // Pastel Orange



**CSB-219**  
Derin Mavi // Deep Blue

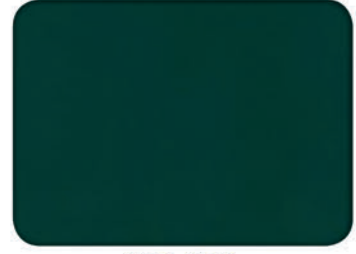
## CLASS BOND



**CSB-220**  
Sar / Yellow



**CSB-221**  
Açık Yeşil / Light Green



**CSB-222**  
Koyu Yeşil / Deep Green





### Kompozit Panel Ebatları

Panel Dimensions

Kompozit Panel Kalınlıkları Thickness Of Composite Panel	3 mm - 4 mm - 5 mm - 6 mm
Maksimum Üretim Boyu Maximum Production Length	10000 mm
Standart Üretim Ebatları Standard Panel Dimensions	1250 mm x 3200 mm x 4 mm 1500 mm x 3200 mm x 4 mm

### Eğiklik

Bow

Panel Boyu Panel Length	< 1500 mm	max 5mm
Panel Boyu Panel Length	1500 mm - 3000 mm	max 7 mm
Panel Boyu Panel Length	< 3000 mm	max 10 mm

### Kullanılan Alüminyum Levhanın Mekanik Özellikleri

Mechanical Properties Of Aluminium

<b>Çekme Mukavemeti (Rm)</b> Tensile Strength (Rm)	186 MPa (min 130 Mpa)
<b>Akma Mukavemeti (Rp 0.2)</b> Yield Strength (Rp 0.2)	148 MPa (min 90 Mpa)
<b>Yüzde Uzama (A50%)</b> Elongation	6.8 (min 5)
<b>Elastikiyet Modülü</b> Modulus Of Elasticity	70000 MPa

### Üretim Toleransları

Tolerances

<b>Kompozit Panel Kalınlığı</b> Thickness Of Compositive Panel	± 0.2 mm
<b>Kompozit Panel Genişliği</b> Width Of Compositive Panel	± 2.0 mm
<b>Kompozit Panel Boyu</b> Length Of Compositive Panel	± 4.0 mm
<b>Diagonal Fark</b> Diagonal Difference	max 3.0 mm
<b>Doğrusallık (Ende Ve Boyda)</b> Linearity (On Width And Length)	± 0.2 mm
<b>Uzama Miktarı (A%50)</b> Elongation	1.2 mm/m (50° C)

- **Ulusan tarafından önerilen alt kontsrüksiyon ve montaj detayları uygulandığı takdirde,**  
If suggested sub construction and installation details are applied,
- **Kompozit paneller / Composite panels**  
**Arwisbond 20 yıl / Arwisbond 20 years**  
**Facebond 20 yıl / Facebond 20 years**  
**Plussbond 15 yıl garantilidir. / Plussbond 15 years are under guarantee.**
- **Ton farkını engellemek için bir defada sipariş verilmesi önerilir.**  
To ensure the color consistency, placing total requirement in one order is recommended.
- **Lütfen kompozit panelleri ok yönünde kullanınız.**  
Please applicate all the panels the arrow direction.

